

Board 1
Wed AM

Set 77549
May 4, 2011

Board 1
GW Spring STaC



NORTH

♠ K 8 3
♥ A J 7 4
♦ 9 8 3
♣ K J 10

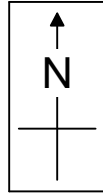
1

WEST

♠ -----
♥ K Q 8 6 5
♦ K 6 5 2
♣ 9 6 5 2

EAST

♠ 10 4 2
♥ 10 2
♦ A Q J 10 7
♣ A Q 7



SOUTH

♠ A Q J 9 7 6 5
♥ 9 3
♦ 4
♣ 8 4 3

Printed by ACBL

Board 19
Wed AM

Set 77549
May 4, 2011

Board 19
GW Spring STaC



NORTH

♠ K 10 8 4
♥ A 7 6
♦ K 10 6 5 4 3
♣ -----

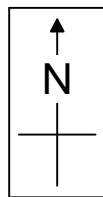
19

WEST

♠ Q 7
♥ 4 3
♦ J 9 7 2
♣ A J 6 5 4

EAST

♠ A 9 5 2
♥ K J 8 5
♦ Q 8
♣ K Q 8



SOUTH

♠ J 6 3
♥ Q 10 9 2
♦ A
♣ 10 9 7 3 2

Printed by ACBL

Board 2
Wed AM

Set 77549
May 4, 2011

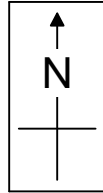
Board 2
GW Spring STaC



NORTH
♠ A Q 6 5 4
♥ Q 7 3 2
♦ 9 3 2
♣ K

2

WEST
♠ 10
♥ J 10 4
♦ A K Q J 10 4
♣ Q 3 2



EAST
♠ 9 2
♥ A 8
♦ 8 7 6 5
♣ A J 10 7 4

SOUTH
♠ K J 8 7 3
♥ K 9 6 5
♦ -----
♣ 9 8 6 5

Printed by ACBL

Board 20
Wed AM

Set 77549
May 4, 2011

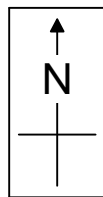
Board 20
GW Spring STaC



NORTH
♠ A Q J 10 3
♥ J 5 2
♦ 7
♣ 7 6 5 3

20

WEST
♠ 9 8 4 2
♥ A 10 6
♦ K J 6
♣ A J 10



EAST
♠ 7
♥ 9 8 7 4 3
♦ Q 8 5
♣ K Q 8 4

SOUTH
♠ K 6 5
♥ K Q
♦ A 10 9 4 3 2
♣ 9 2

Printed by ACBL

Board 3
Wed AM

Set 77549
May 4, 2011

Board 3
GW Spring STaC



NORTH

♠ Q J 10 8 5 3
♥ -----
♦ 9 7 4 3
♣ A K 5

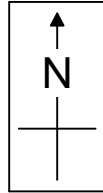
3

WEST

♠ A K 9 4
♥ J
♦ A J 6
♣ 10 7 6 4 2

EAST

♠ 7 6 2
♥ A Q 9 8 5 3
♦ K 10 8 5
♣ -----



SOUTH

♠ -----
♥ K 10 7 6 4 2
♦ Q 2
♣ Q J 9 8 3

Printed by ACBL

Board 21
Wed AM

Set 77549
May 4, 2011

Board 21
GW Spring STaC



NORTH

♠ Q 7
♥ A J 9
♦ K Q J 9
♣ A 9 8 2

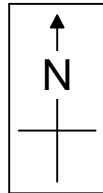
21

WEST

♠ 2
♥ K 6 4 3
♦ 8 7 4 3 2
♣ Q 7 4

EAST

♠ 9 8 6 4 3
♥ Q 8 2
♦ A 6
♣ K 10 6



SOUTH

♠ A K J 10 5
♥ 10 7 5
♦ 10 5
♣ J 5 3

Printed by ACBL

Board 4
Wed AM

Set 77549
May 4, 2011

Board 4
GW Spring STaC



NORTH

♠ K 10 9 7
♥ J 10 7 6 4 3
♦ A K 5
♣ -----

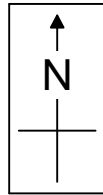
4

WEST

♠ A 8 5
♥ K 9 8
♦ J 6 4
♣ K 6 5 4

EAST

♠ Q 6 3 2
♥ Q 5
♦ 7 2
♣ 10 8 7 3 2



SOUTH

♠ J 4
♥ A 2
♦ Q 10 9 8 3
♣ A Q J 9

Printed by ACBL

Board 22
Wed AM

Set 77549
May 4, 2011

Board 22
GW Spring STaC



NORTH

♠ A Q J
♥ K Q 10
♦ 6 3 2
♣ A Q 5 2

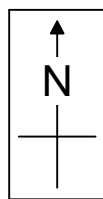
22

WEST

♠ 10 6 3
♥ J 8
♦ K 7 5
♣ K 9 8 6 4

EAST

♠ K 9 8
♥ A 9 7 6
♦ J 9 4
♣ 10 7 3



SOUTH

♠ 7 5 4 2
♥ 5 4 3 2
♦ A Q 10 8
♣ J

Printed by ACBL

Board 5
Wed AM

Set 77549
May 4, 2011

Board 5
GW Spring STaC



NORTH

♠ 4 2
♥ A
♦ Q 10 9 5
♣ J 10 8 7 4 2

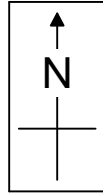
5

WEST

♠ J 10 8 7 6
♥ J 9 6
♦ K J
♣ K 9 6

EAST

♠ A K 5 3
♥ 5 3 2
♦ A 7 6 4
♣ Q 3



SOUTH

♠ Q 9
♥ K Q 10 8 7 4
♦ 8 3 2
♣ A 5

Printed by ACBL

Board 23
Wed AM

Set 77549
May 4, 2011

Board 23
GW Spring STaC



NORTH

♠ 10 9 8 7
♥ A 8 5
♦ K 5
♣ K Q J 8

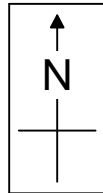
23

WEST

♠ 4 3
♥ 9 7 4
♦ A 10 8 6 3
♣ 7 6 4

EAST

♠ J 5
♥ K J 10 6 3
♦ J 7
♣ A 10 9 5



SOUTH

♠ A K Q 6 2
♥ Q 2
♦ Q 9 4 2
♣ 3 2

Printed by ACBL

Board 6
Wed AM

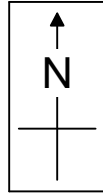
Set 77549
May 4, 2011

Board 6
GW Spring STaC



WEST
♠ A Q 7 6 3
♥ K 10
♦ K J 9 5
♣ J 9

NORTH
♠ 10
♥ Q 6 4 2
♦ Q 7 3 2
♣ Q 6 5 2



SOUTH
♠ J 9
♥ A 9 8 3
♦ A 8 6 4
♣ K 7 4

6

EAST
♠ K 8 5 4 2
♥ J 7 5
♦ 10
♣ A 10 8 3

Printed by ACBL

Board 24
Wed AM

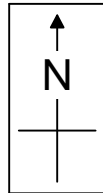
Set 77549
May 4, 2011

Board 24
GW Spring STaC



WEST
♠ Q J 6 4
♥ K 10 4
♦ J 5
♣ A 9 8 3

NORTH
♠ 9 7 3
♥ Q 7 5 3
♦ K 6 4 3
♣ K 4



SOUTH
♠ A 8 2
♥ A 8 6
♦ Q 7
♣ Q J 10 6 2

24

EAST
♠ K 10 5
♥ J 9 2
♦ A 10 9 8 2
♣ 7 5

Printed by ACBL

Board 7
Wed AM

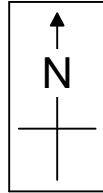
Set 77549
May 4, 2011

Board 7
GW Spring STaC



WEST
♠ 9 8 7
♥ 7 6 2
♦ A 8 7 6 3
♣ J 5

NORTH
♠ Q 6 5
♥ J 10 9 8
♦ K J 5
♣ 6 3 2



SOUTH
♠ K 4 3
♥ Q 5 4
♦ 10 9 4
♣ K 10 9 7

EAST
♠ A J 10 2
♥ A K 3
♦ Q 2
♣ A Q 8 4

7

Printed by ACBL

Board 25
Wed AM

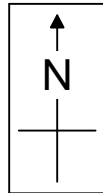
Set 77549
May 4, 2011

Board 25
GW Spring STaC



WEST
♠ Q 8 7 6 5
♥ K J 3 2
♦ 4 2
♣ 10 7

NORTH
♠ J 2
♥ 8 6 5
♦ K J 8 6
♣ K J 5 2



SOUTH
♠ K 9 3
♥ Q 7
♦ A 10 9 5 3
♣ Q 9 6

EAST
♠ A 10 4
♥ A 10 9 4
♦ Q 7
♣ A 8 4 3

25

Printed by ACBL

Board 8
Wed AM

Set 77549
May 4, 2011

Board 8
GW Spring STaC



NORTH

♠ Q J
♥ A 4
♦ J 7 2
♣ A K J 9 3 2

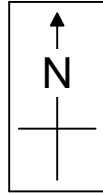
8

WEST

♠ 7 3
♥ 10 8 3 2
♦ A 10 9
♣ Q 10 6 5

EAST

♠ A K 9 8 6 5 4 2
♥ K J 5
♦ 4
♣ 4



SOUTH

♠ 10
♥ Q 9 7 6
♦ K Q 8 6 5 3
♣ 8 7

Printed by ACBL

Board 26
Wed AM

Set 77549
May 4, 2011

Board 26
GW Spring STaC



NORTH

♠ 9 3
♥ J 9 5 2
♦ A K 9 2
♣ 10 7 3

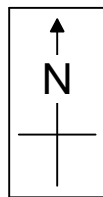
26

WEST

♠ 10 7 6 5
♥ A K
♦ J 8 4 3
♣ Q J 4

EAST

♠ A K 8 4
♥ 10 8 6 4
♦ 10 6
♣ A 9 8



SOUTH

♠ Q J 2
♥ Q 7 3
♦ Q 7 5
♣ K 6 5 2

Printed by ACBL

Board 9
Wed AM

Set 77549
May 4, 2011

Board 9
GW Spring STaC



NORTH

♠ Q 10
♥ 9 6 5
♦ A J 5 3
♣ J 7 6 2

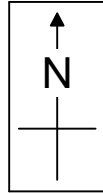
9

WEST

♠ A 4
♥ 4
♦ Q 8 7 4
♣ A K 9 8 5 4

EAST

♠ 8 6 5 2
♥ A K Q J 8 7 2
♦ ----
♣ Q 10



SOUTH

♠ K J 9 7 3
♥ 10 3
♦ K 10 9 6 2
♣ 3

Printed by ACBL

Board 27
Wed AM

Set 77549
May 4, 2011

Board 27
GW Spring STaC



NORTH

♠ K 3
♥ A 6 2
♦ A Q 8 4 2
♣ A 7 3

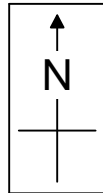
27

WEST

♠ 10 9 8 6
♥ Q 9 8 5
♦ J 5
♣ 6 5 4

EAST

♠ A J 4 2
♥ K J 7
♦ K 3
♣ K Q J 8



SOUTH

♠ Q 7 5
♥ 10 4 3
♦ 10 9 7 6
♣ 10 9 2

Printed by ACBL

Board 10
Wed AM

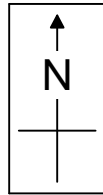
Set 77549
May 4, 2011

Board 10
GW Spring STaC



WEST
♠ A 9 2
♥ K 10 9 4
♦ A 10
♣ A K 3 2

NORTH
♠ Q J 8 4 3
♥ A 7
♦ 9 6 5
♣ Q 9 8



SOUTH
♠ 7 6 5
♥ 8 6 5
♦ K Q 4 2
♣ J 10 6

EAST
♠ K 10
♥ Q J 3 2
♦ J 8 7 3
♣ 7 5 4

10

Printed by ACBL

Board 28
Wed AM

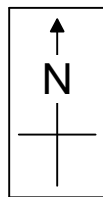
Set 77549
May 4, 2011

Board 28
GW Spring STaC



WEST
♠ Q 10 9 7 5
♥ A 6
♦ Q 10 4 3
♣ Q 7

NORTH
♠ -----
♥ Q 10 9 4 2
♦ K J 9 8
♣ K 10 8 5



SOUTH
♠ A J 3
♥ K J 5
♦ A 7 6 2
♣ 6 3 2

EAST
♠ K 8 6 4 2
♥ 8 7 3
♦ 5
♣ A J 9 4

28

Printed by ACBL

Board 11
Wed AM

Set 77549
May 4, 2011

Board 11
GW Spring STaC



NORTH

♠ 9 7 5
♥ 9 8 6
♦ A Q
♣ Q J 10 4 3

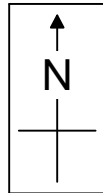
11

WEST

♠ K Q J 8 6
♥ K 7 3
♦ J 10 8 7
♣ 6

EAST

♠ 2
♥ A 10 5 4
♦ K 9 6 5 4
♣ K 7 5



SOUTH

♠ A 10 4 3
♥ Q J 2
♦ 3 2
♣ A 9 8 2

Printed by ACBL

Board 29
Wed AM

Set 77549
May 4, 2011

Board 29
GW Spring STaC



NORTH

♠ A 5 4
♥ A 7 5
♦ Q 10 8 6 4
♣ 5 3

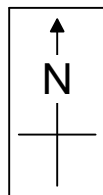
29

WEST

♠ 7 6 2
♥ K 10
♦ K 7 5
♣ A K Q 9 6

EAST

♠ K 10 9 3
♥ J 4 3 2
♦ 9
♣ J 8 7 4



SOUTH

♠ Q J 8
♥ Q 9 8 6
♦ A J 3 2
♣ 10 2

Printed by ACBL

Board 12
Wed AM

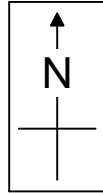
Set 77549
May 4, 2011

Board 12
GW Spring STaC



WEST
♠ 10 7
♥ Q 8 6 5 3
♦ J 10 5
♣ J 3 2

NORTH
♠ 8 4 3
♥ K 7 2
♦ 7 6 3 2
♣ A 7 6



SOUTH
♠ A K Q 9 5
♥ A
♦ A K 8
♣ K Q 9 5

EAST
♠ J 6 2
♥ J 10 9 4
♦ Q 9 4
♣ 10 8 4

12

Printed by ACBL

Board 30
Wed AM

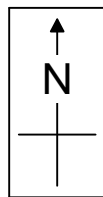
Set 77549
May 4, 2011

Board 30
GW Spring STaC



WEST
♠ Q 10 4 3
♥ Q 5
♦ A J 9 2
♣ J 7 2

NORTH
♠ 6 5 2
♥ K J 10 2
♦ 10 8 5
♣ A 10 5



SOUTH
♠ K 7
♥ 7 4
♦ K Q 6 4 3
♣ Q 9 8 4

EAST
♠ A J 9 8
♥ A 9 8 6 3
♦ 7
♣ K 6 3

30

Printed by ACBL

Board 13
Wed AM

Set 77549
May 4, 2011

Board 13
GW Spring STaC



NORTH

♠ A Q 7 3 2
♥ 10 2
♦ 10 9 5 4 3
♣ 2

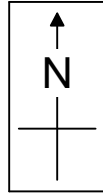
13

WEST

♠ 9 8 4
♥ K 9 7 6 5
♦ Q 2
♣ A 9 8

EAST

♠ K J 5
♥ A Q 4 3
♦ A J
♣ K J 10 7



SOUTH

♠ 10 6
♥ J 8
♦ K 8 7 6
♣ Q 6 5 4 3

Printed by ACBL

Board 31
Wed AM

Set 77549
May 4, 2011

Board 31
GW Spring STaC



NORTH

♠ Q J 7 2
♥ 9 7 6
♦ A 10 8
♣ A Q 6

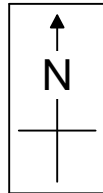
31

WEST

♠ 10 4
♥ 5 4 3 2
♦ 7 5 4
♣ J 9 8 4

EAST

♠ A 9 5
♥ A J
♦ Q J 6 3
♣ K 5 3 2



SOUTH

♠ K 8 6 3
♥ K Q 10 8
♦ K 9 2
♣ 10 7

Printed by ACBL

Board 14
Wed AM

Set 77549
May 4, 2011

Board 14
GW Spring STaC



NORTH

♠ A 8 5
♥ Q J 8 7 5 2
♦ Q 8 6
♣ 3

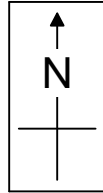
14

WEST

♠ 4 3
♥ 6 4
♦ J 10 4 3 2
♣ K Q 5 4

EAST

♠ K 10 9 7 2
♥ A 9 3
♦ K 9
♣ 9 7 6



SOUTH

♠ Q J 6
♥ K 10
♦ A 7 5
♣ A J 10 8 2

Printed by ACBL

Board 32
Wed AM

Set 77549
May 4, 2011

Board 32
GW Spring STaC



NORTH

♠ K 10 4
♥ 10
♦ A Q J 4
♣ J 9 4 3 2

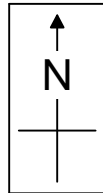
32

WEST

♠ 9 7 6 2
♥ A J 2
♦ 3 2
♣ Q 10 7 6

EAST

♠ A J 8
♥ K Q 7 4 3
♦ 8 7 6 5
♣ 5



SOUTH

♠ Q 5 3
♥ 9 8 6 5
♦ K 10 9
♣ A K 8

Printed by ACBL

Board 15
Wed AM

Set 77549
May 4, 2011

Board 15
GW Spring STaC



NORTH

♠ A Q 10
♥ K 9 5 3 2
♦ K J 6
♣ K 5

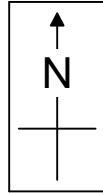
15

WEST

♠ K 2
♥ A 6 4
♦ Q 10 9 8 7 5
♣ A 6

EAST

♠ J 6 5 3
♥ J 8 7
♦ 4 3
♣ 10 8 7 4



SOUTH

♠ 9 8 7 4
♥ Q 10
♦ A 2
♣ Q J 9 3 2

Printed by ACBL

Board 33
Wed AM

Set 77549
May 4, 2011

Board 33
GW Spring STaC



NORTH

♠ A 7 6 3
♥ 5
♦ Q 10 8 4
♣ J 10 7 3

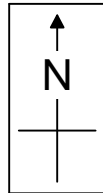
33

WEST

♠ J 9
♥ J 10 7 6 2
♦ J 7 6 3 2
♣ A

EAST

♠ K 4 2
♥ K 9 4 3
♦ K 5
♣ K Q 8 5



SOUTH

♠ Q 10 8 5
♥ A Q 8
♦ A 9
♣ 9 6 4 2

Printed by ACBL

Board 16
Wed AM

Set 77549
May 4, 2011

Board 16
GW Spring STaC



NORTH

♠ K Q 10 9
♥ J 4
♦ Q 9 6
♣ K 7 4 2

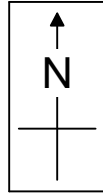
16

WEST

♠ J 7 2
♥ A K 8 6
♦ 8 7
♣ A J 9 5

EAST

♠ 6 4
♥ Q 10 9
♦ K 10 5 3
♣ Q 10 8 6



SOUTH

♠ A 8 5 3
♥ 7 5 3 2
♦ A J 4 2
♣ 3

Printed by ACBL

Board 34
Wed AM

Set 77549
May 4, 2011

Board 34
GW Spring STaC



NORTH

♠ J 10 6
♥ J 9 7 5 3
♦ 9 8 7 2
♣ 2

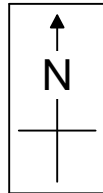
34

WEST

♠ K 7
♥ 8 4 2
♦ K J 6 5
♣ A K Q 8

EAST

♠ A Q 8 5 2
♥ -----
♦ A 10
♣ 10 7 6 5 4 3



SOUTH

♠ 9 4 3
♥ A K Q 10 6
♦ Q 4 3
♣ J 9

Printed by ACBL

Board 17
Wed AM

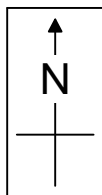
Set 77549
May 4, 2011

Board 17
GW Spring STaC



WEST
♠ K 9 5 2
♥ A Q 7
♦ Q 8
♣ 10 7 3 2

NORTH
♠ Q 7 3
♥ 8
♦ A K 6 4 2
♣ K 9 8 5



SOUTH
♠ J 8
♥ K J 10 9 5 4 3
♦ 9 5 3
♣ 6

EAST
♠ A 10 6 4
♥ 6 2
♦ J 10 7
♣ A Q J 4

17

Printed by ACBL

Board 35
Wed AM

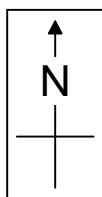
Set 77549
May 4, 2011

Board 35
GW Spring STaC



WEST
♠ Q 4 3
♥ A Q 8 5
♦ 7 6 2
♣ A 8 7

NORTH
♠ 8
♥ K 10 9
♦ J 10 9 8 5 4 3
♣ 6 5



SOUTH
♠ K J 7 5
♥ J 7 6
♦ Q
♣ K Q 9 4 3

EAST
♠ A 10 9 6 2
♥ 4 3 2
♦ A K
♣ J 10 2

35

Printed by ACBL

Board 18
Wed AM

Set 77549
May 4, 2011

Board 18
GW Spring STaC



NORTH

♠ 3
♥ J 9 5 3
♦ Q J 10 5 2
♣ A 8 2

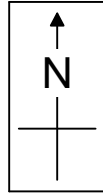
18

WEST

♠ 8 2
♥ 10 8 7 6 4 2
♦ 7
♣ 9 6 4 3

EAST

♠ A K 9 6 5
♥ K
♦ 9 8 6 4 3
♣ 7 5



SOUTH

♠ Q J 10 7 4
♥ A Q
♦ A K
♣ K Q J 10

Printed by ACBL

Board 36
Wed AM

Set 77549
May 4, 2011

Board 36
GW Spring STaC



NORTH

♠ Q 8 4 3 2
♥ K 4 3
♦ K 7
♣ A 7 2

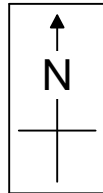
36

WEST

♠ A J 10 7
♥ 5
♦ Q 10 6 5
♣ 10 9 6 4

EAST

♠ 6
♥ A Q J 10 6
♦ J 9 3
♣ Q J 8 5



SOUTH

♠ K 9 5
♥ 9 8 7 2
♦ A 8 4 2
♣ K 3

Printed by ACBL